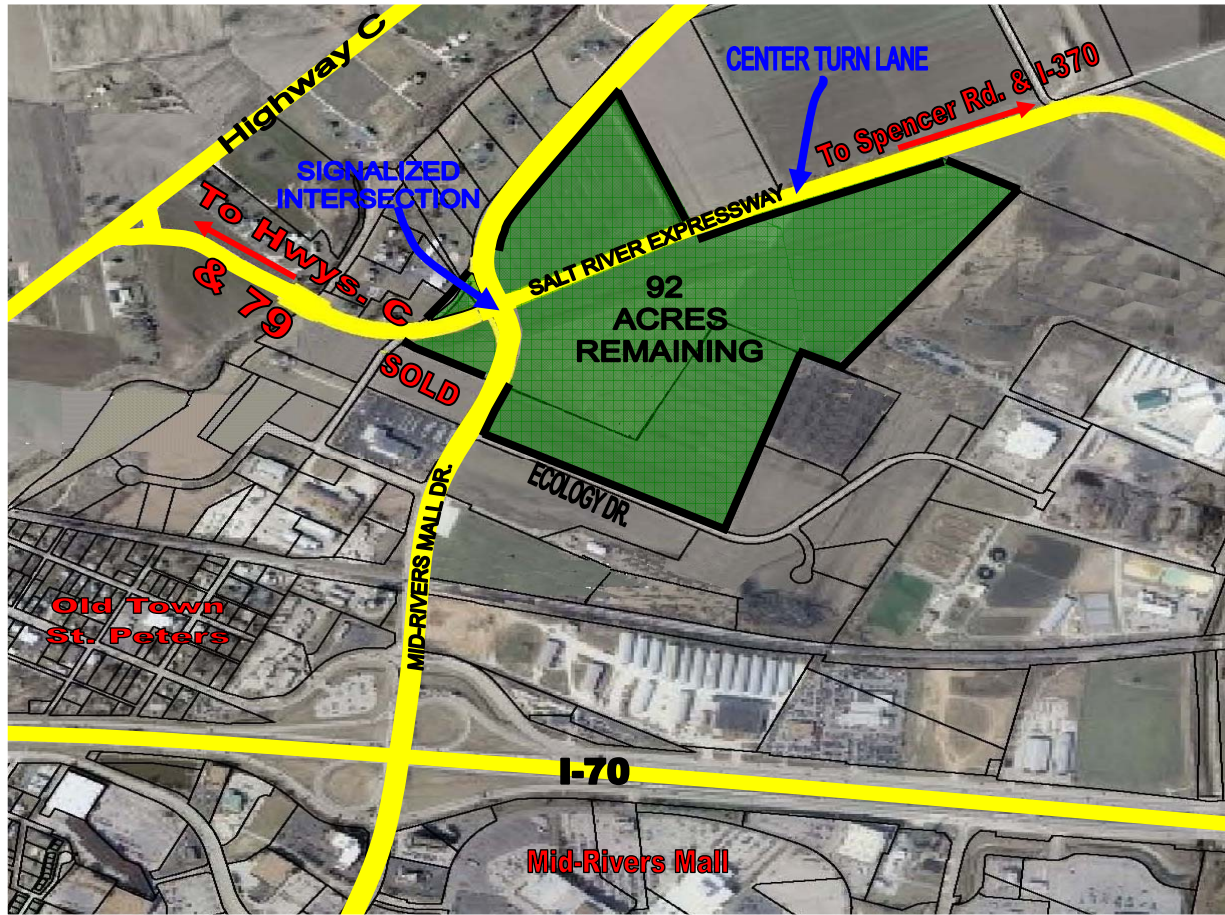


FOR SALE

1 TO 92± ACRES

MID-RIVERS MALL DRIVE

SALT RIVER EXPRESSWAY



AT I-70 INTERCHANGE

- 8,800± Feet of Road Frontage
- Pre-Approved Curb Cuts
- Four Corners at Signalized Intersection
- Priced For Commercial and Industrial Use

Sale Prices: \$175,000.00 to \$523,000.00 Per Acre

Note: All roads shown have been funded, but not all construction is complete.

Contact: Ben M. Hilliker

HILLIKER

HILLIKER CORPORATION

2001 SOUTH HANLEY ROAD
SUITE 300 • ST. LOUIS, MO 63144

(314) 781-0001

Commercial • Industrial • Investment
Real Estate Services

