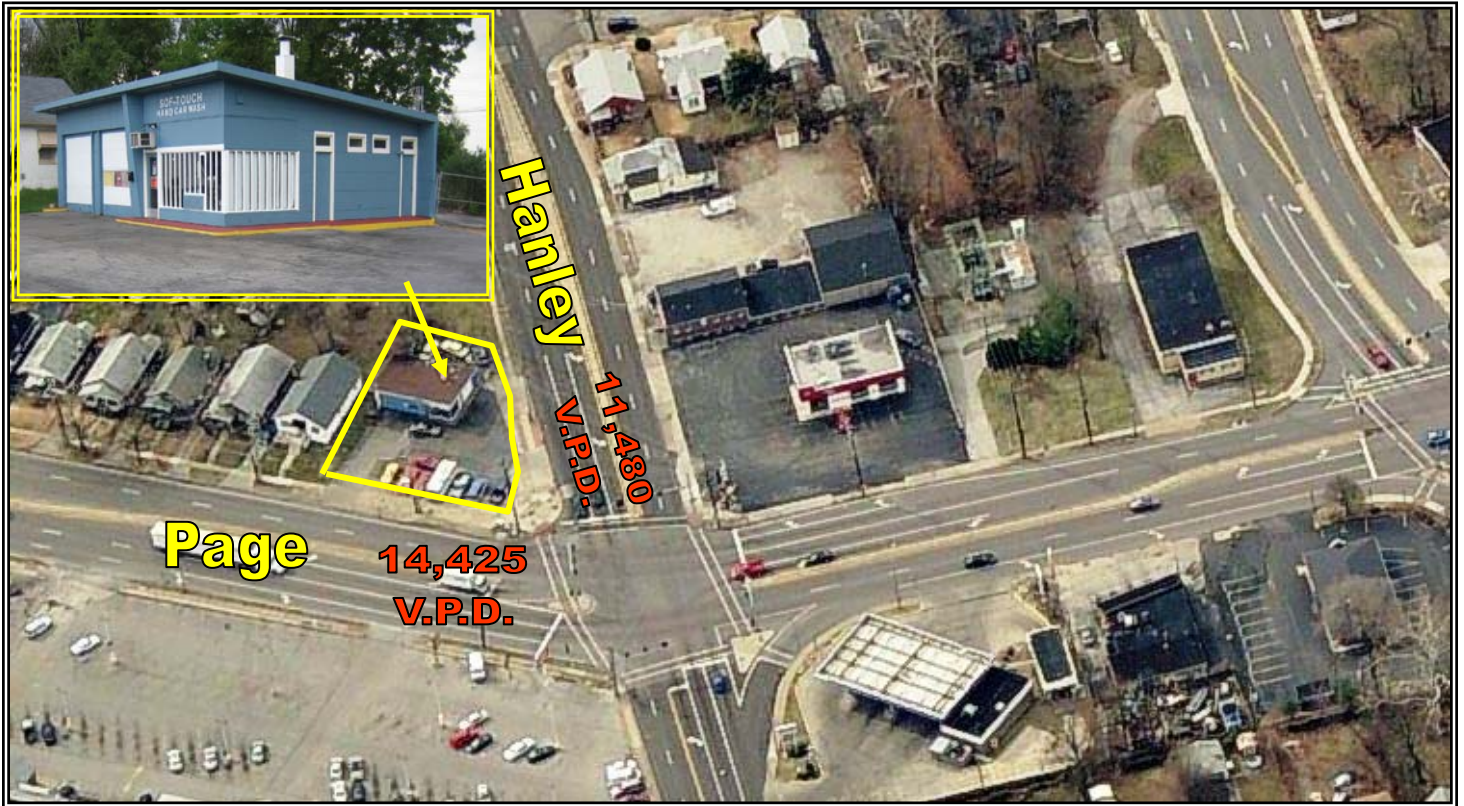


FOR SALE

1,247± SQ. Ft. BUILDING

ON CORNER LOT



7960 PAGE AVENUE

ST. LOUIS, MO 63133

- Curb Cuts on Both Page and Hanley
- High Visibility
- 25,000± V.P.D. Daily (Combined County & State Data)
- Zoned "C" Commercial

Sale Price: \$275,000.00

Contact: Peter A. Pfeifer, SIOR



HILLIKER CORPORATION

2001 SOUTH HANLEY ROAD
SUITE 300 • ST. LOUIS, MO 63144

(314) 781-0001

Commercial • Industrial • Investment
Real Estate Services

