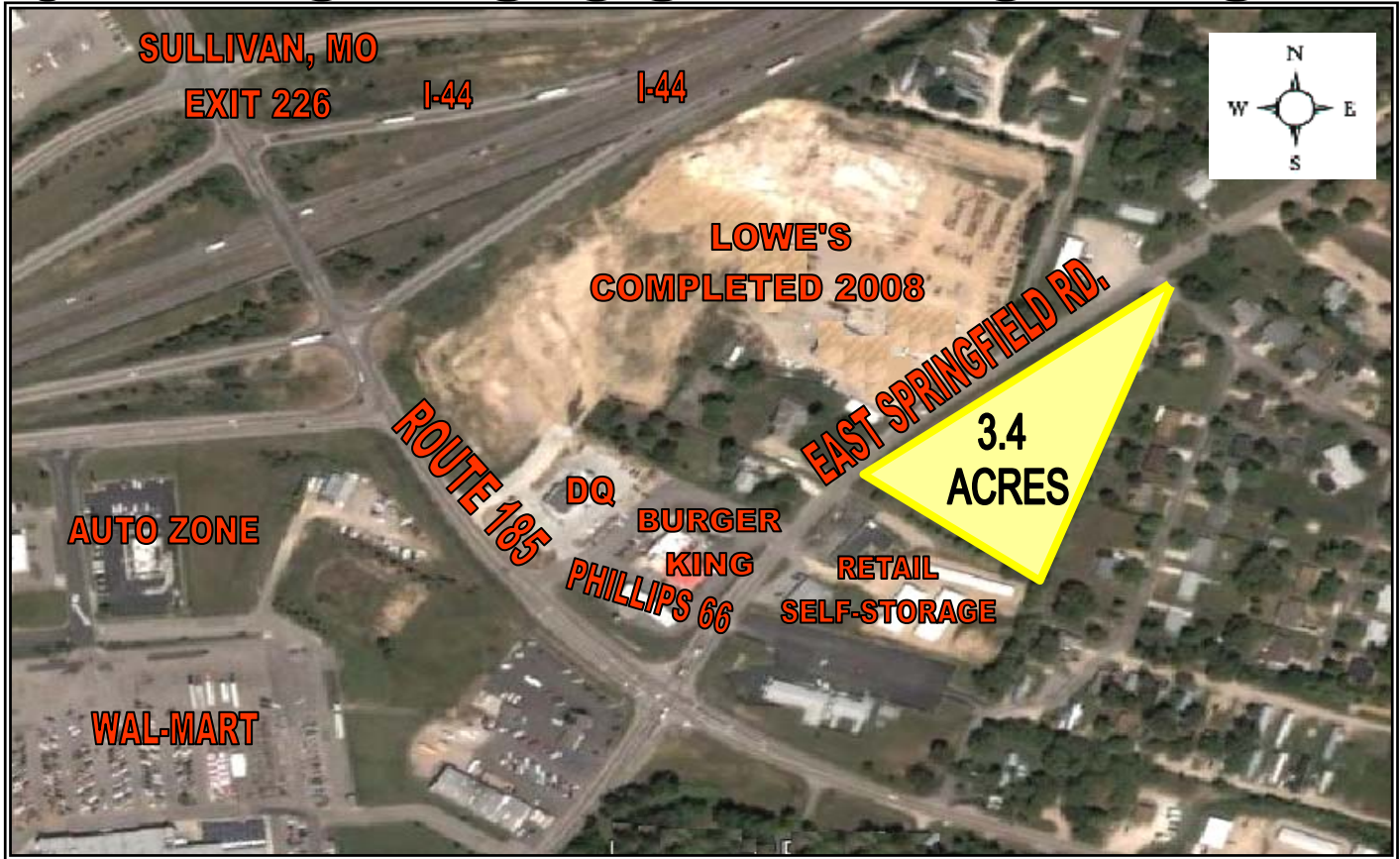


NEW PRICE

FOR SALE

3.4± ACRES COMMERCIAL SITE



780 EAST SPRINGFIELD ROAD SULLIVAN, MO AREA

- Developing Area Near New Lowe's, Burger King, Dairy Queen, & New Senior Housing
- Level Site with Water, Sewer & Electric Service Available
- Located in Oak Grove Village, Adjacent to Sullivan, Missouri

For Sale: ~~\$720,000.00 (\$4.85 Per Sq. Ft.)~~

New Price: \$395,000.00 (\$2.67 Per Sq. Ft.)

Contact: Scott E. Martin

HILLIKER

HILLIKER CORPORATION

2001 SOUTH HANLEY ROAD
SUITE 300 • ST. LOUIS, MO 63144

(314) 781-0001

Commercial • Industrial • Investment
Real Estate Services

 Individual Membership in the Society
of Industrial and Office Realtors

Information is from appropriate sources but is not guaranteed. No representation is made to environmental or other conditions of property. We recommend Purchaser Investigate fully.