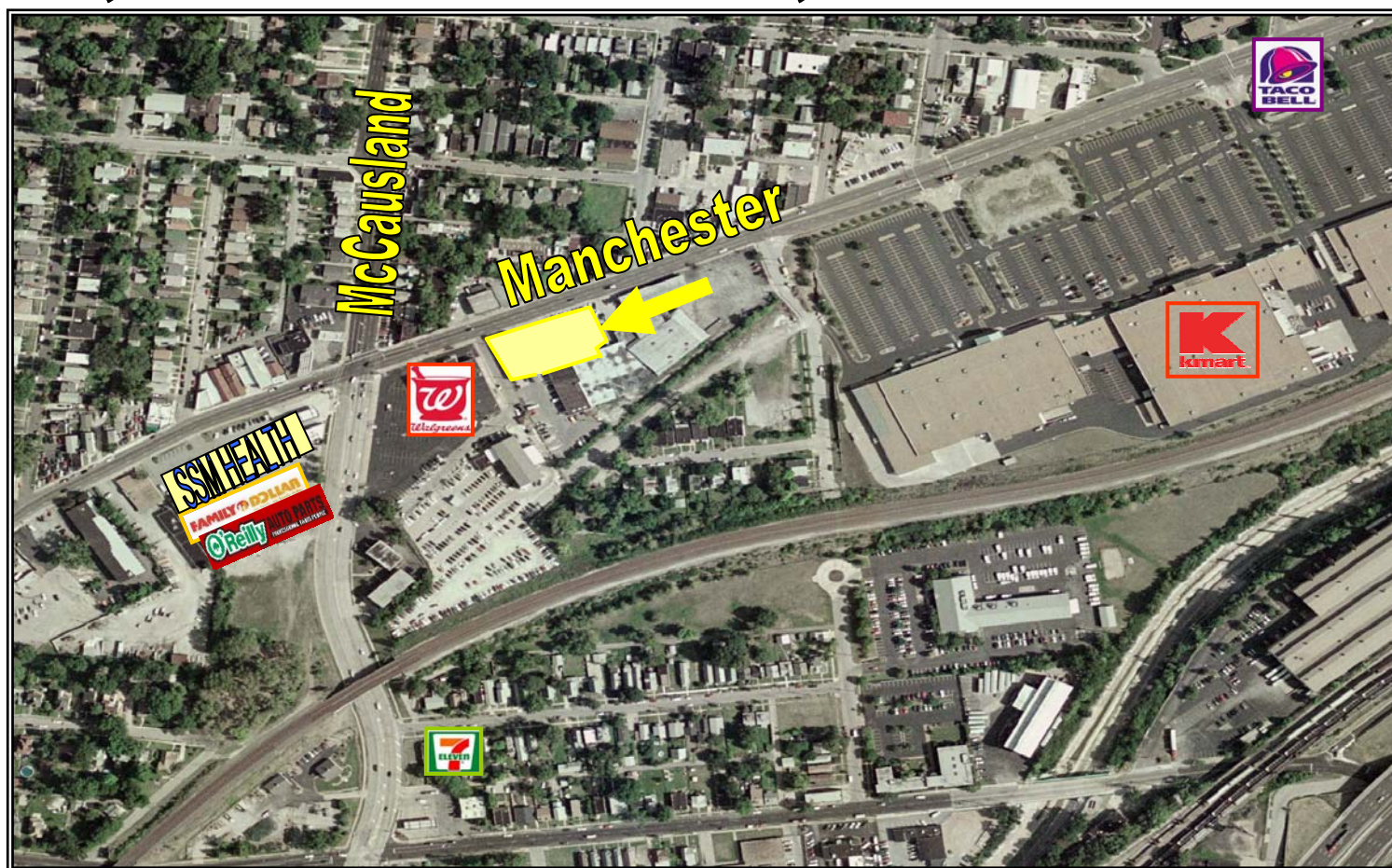


# FOR LEASE

## 1,500± SQ. FT. - 3,000± SQ. FT.



### 6900-6924 MANCHESTER ROAD ST. LOUIS, MO 63143

	1-MILE	3 MILE	MANCHESTER	14,408 V.P.D.
POPULATION	19,926	142,194	MANCHESTER	14,408 V.P.D.
HOUSEHOLD INCOME	\$37,403	\$43,134	MANCHESTER CITY	9,658 V.P.D.
DAYTIME POPULATION	12,502	137,658	MCCAUSLAND	24,805 V.P.D.

- Visibility, Access and Great Site Lines from Manchester Road

Lease Rate: \$1,500.00 Per Month, NNN (Per 1,500 Sq. Ft. Of Space)

Contact: Patryk Kowalczyk



HILLIKER CORPORATION

2001 SOUTH HANLEY ROAD  
SUITE 300 • ST. LOUIS, MO 63144

(314) 781-0001

Commercial • Industrial • Investment  
Real Estate Services

