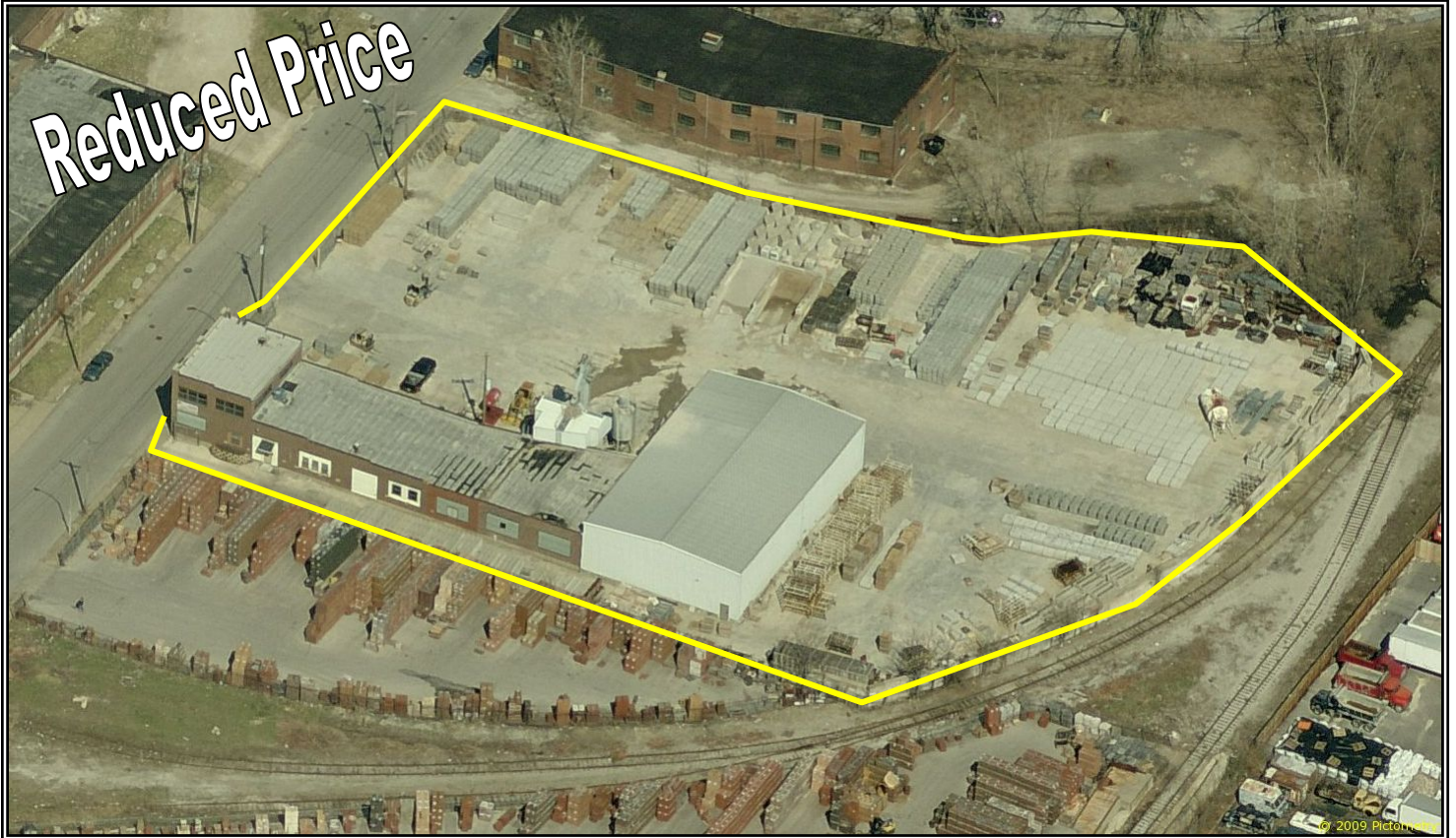


# FOR SALE

## 13,600± SQ. FT. WAREHOUSE BUILDING ON 2.17± ACRES



### 3916 GERALDINE ST. LOUIS, MO 63115

- Ideal For Contractor
- 2,900± Sq. Ft. Office
- 2.17± Acre Site
- Zoned "K" Industrial
- Railroad Access Possible

~~Sale Price: \$395,000.00~~

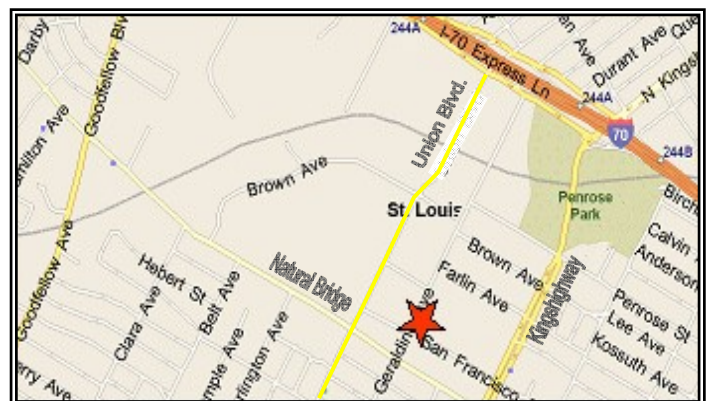
**Reduced Sale Price: \$295,000.00**

Contact: James Newman or

H. Meade Summers  
HILLIKER CORPORATION

HILLIKER

2001 SOUTH HANLEY ROAD  
SUITE 300 • ST. LOUIS, MO 63144



(314) 781-0001

Commercial • Industrial • Investment  
Real Estate Services

