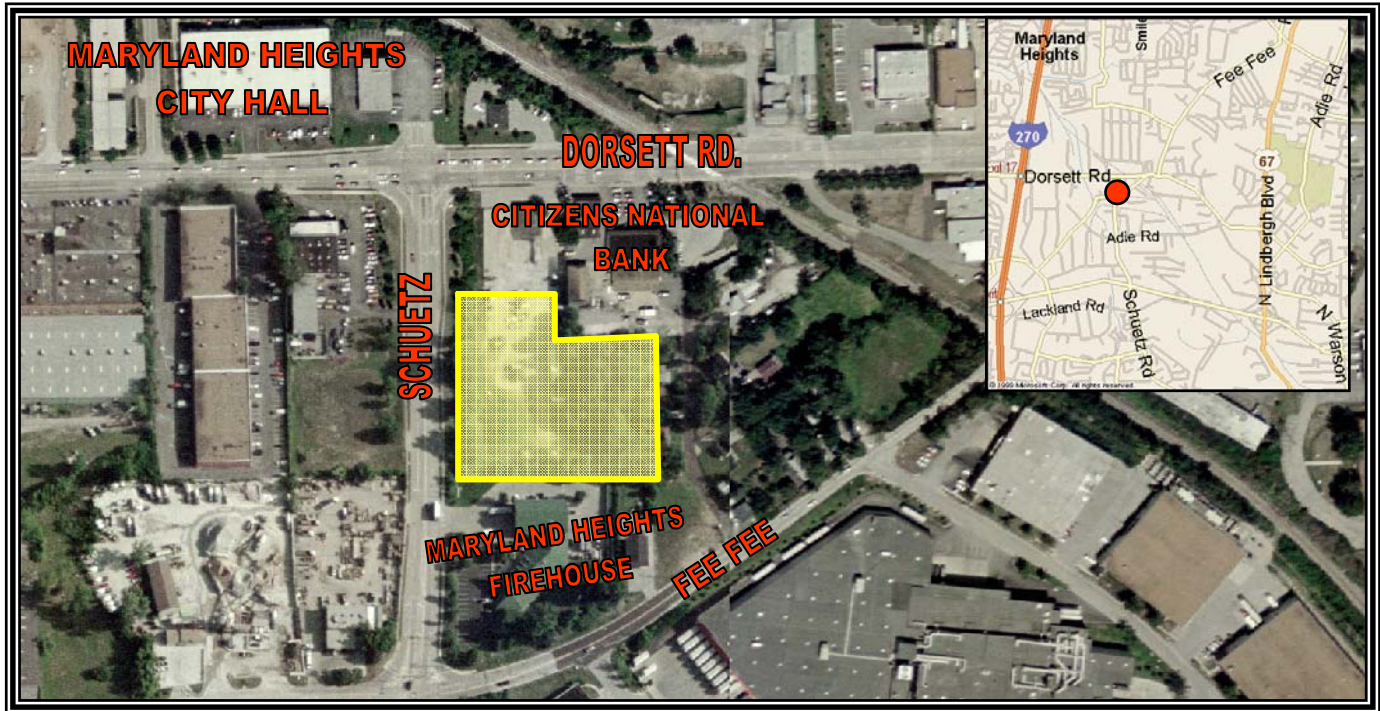


# FOR SALE

## 2.66± ACRES

### DEVELOPMENT OPPORTUNITY



## 26XX SCHUETZ ROAD

### MARYLAND HEIGHTS, MO 63043

- Located on Schuetz Between Dorsett and Fee Fee
- Multitude of Developments Possible; Office, Medical, or Light Industrial
- Between Two High Profile Newly Constructed Buildings
- M-1 Zoning Allows Multiple of Uses
- All Utilities to Site

For Sale: \$995,000.00

Contact: Brian O'Connell or Hal C. Ball, SIOR



HILLIKER CORPORATION

2001 SOUTH HANLEY ROAD  
SUITE 300 • ST. LOUIS, MO 63144

(314) 781-0001

Commercial • Industrial • Investment  
Real Estate Services

